

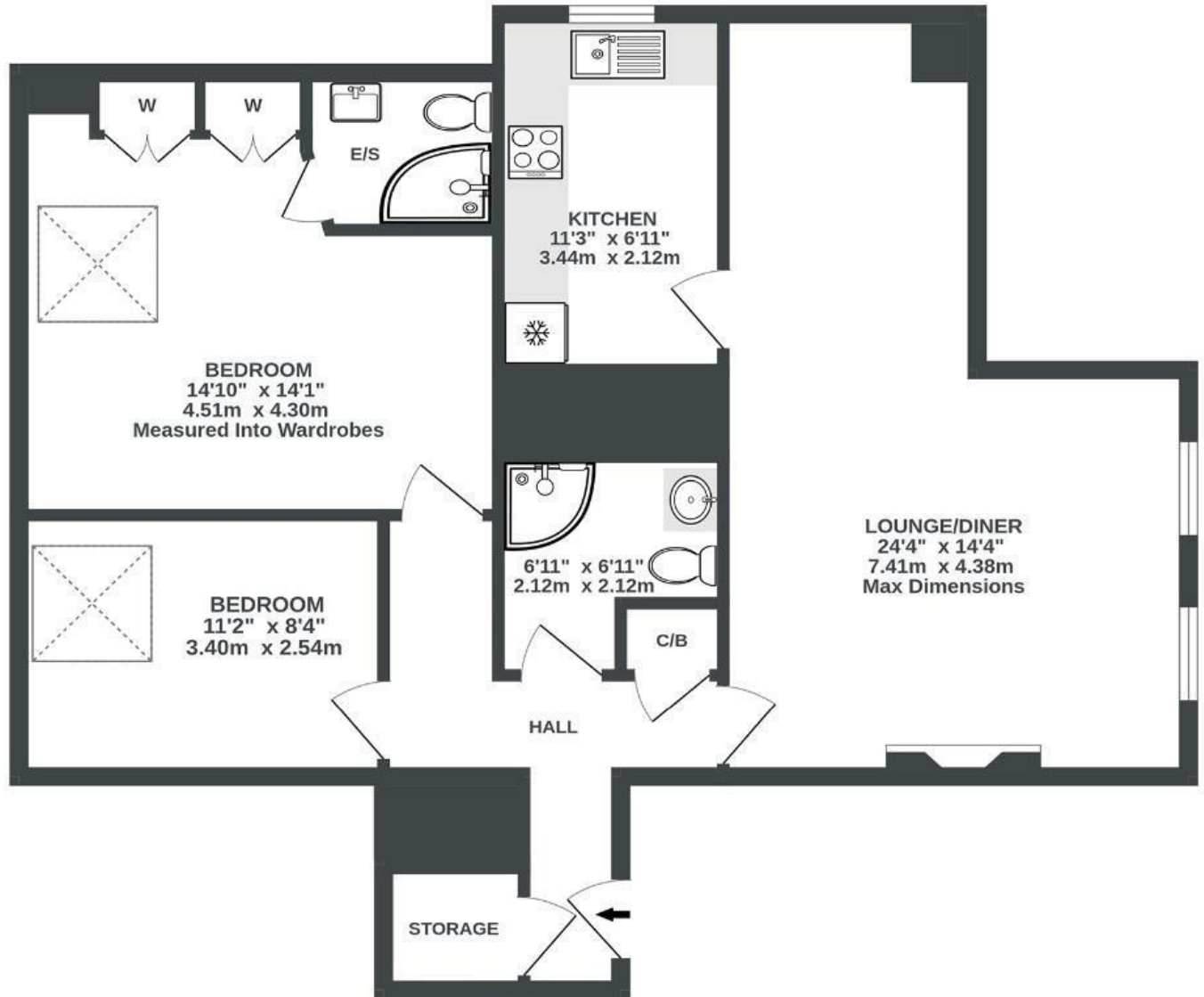
Oakfield Mansions

CLIFTON

APPROXIMATE FLOOR AREA
72.9 SQM / 785 SQFT



THIRD FLOOR
785 sq.ft. (72.9 sq.m.) approx.



Illustrations are for reference purposes only, measurements are approximate, not to scale.

Boardwalk

Oakfield Grove

CLIFTON, BRISTOL



£400,000



2 Bedrooms



BS8 2BN



2 Bathrooms

"Living here means everything is on your doorstep - Sunday breakfast in Clifton Village, evenings out on Whiteladies Road, and a morning walk down Park Street to the office. We'll miss the tennis at Clifton Club, a quick pint at The Alma, and that view from the bedroom window during the Balloon Fiesta."

